

the Lighthouse

Events | Benevolence | Industry News

Spring 2017

Living in the Future

明建會

The Lighthouse Club Asia Pacific Region

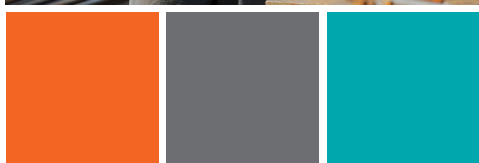
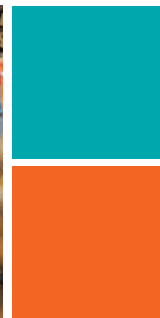
Australia | Cambodia | Hong Kong | Macau | Malaysia | Philippines | Singapore | Thailand | Vietnam

Alis Cum Humanitate



協興
HIP HING

新創建集團成員
Member of NWS Holdings



COMMITTED,
PROFESSIONAL
AND UNITED

THE HIP HING SPIRIT

Internationally recognised construction industry experts

What We Do

We are a group of internationally recognised construction industry professionals, engaged for our delivery of service excellence. We offer a broad range of contract advisory services to assist owners, contractors and construction law firms in the prevention, mitigation or resolution of construction disputes.

Prevention

- Procurement advice
- Tender process management
- Contract drafting and negotiation
- Due diligence
- Risk management
- Policy/procedural development for dispute avoidance
- Project scheduling/programming

Mitigation

- Commercial advice
- Contractual advice
- Contract administration (secondments)
- Claims assessment (quantum and planning)
- Project recovery strategies

Resolution

- Strategic dispute management services
- Claims preparation and analysis
- Expert witness services (quantum and planning)
- Forensic planning and scheduling
- Alternative dispute resolution
- Litigation support
- Capital Project Advisory Services (CPAS)

The Construction Solutions practice within FTI Consulting includes quantity surveyors, engineers, planning professionals, project managers and claims delay specialists, many with dual qualifications in law and arbitration.

With backgrounds in both commercial contracting and professional practice, our consultants are experienced in technical, commercial and legal matters, enabling them to identify key issues quickly and to find the optimum solutions for our clients.

For more information about our Construction Solutions practice or other FTI Consulting advisory services, please contact:



Graham McNeill
Head of Asia Pacific, Construction Solutions
+852 3768 4674
graham.mcneill@fticonsulting.com

www.fticonsulting.com



EXPERTS WITH IMPACT

Chairman's Message

Dear APR Members,

My focus in this edition is on the development of the Lighthouse Club in the region where we continue with the process of changing LHC APR into Lighthouse Club International (LHCI). As you know the initial step was taken back in the AGM of 2016 with the change of name. With that came a challenge to improve the administration of the club to support the new, larger remit.

We are now moving ahead with the task of drafting a Budget and Business Plan to support a small "Secretariat" as the administrative focus of the Club's growth. Broadly, the concept is to build on the current excellent and experienced administration resource in Hong Kong to establish a stand-alone administrative hub based in Hong Kong and shared between HKG Branch and LHCI.

The Secretariat will be responsible for all LHCI/LHC HK administration which will encompass all current Hong Kong administration and functions plus overall LHCI administration such as the Lighthouse magazine, LHCI membership, meetings, registrations etc. The Secretariat will also provide a focus and support for efforts to develop the club in other countries and regions.

Individual LHC Branches will of course continue in control of their own administration, functions and development within the "bottom-up" framework in which the LHC has grown so successfully in Asia.

It is hoped to table a draft Budget and Business Plan for discussion at the next LHCI Regional Meeting which will be held on March 25th in Hong Kong to coincide with the cocktail reception for the Hong Kong Branch Annual Safety Leadership and regional Design for Safety Awards. The Budget and Business Plan will also be tabled to the HK Branch Committee at around the same time.

Following discussion and input from these meetings we are targeting to table the Budget and Business Plan for approval at both Region and Hong Kong Branch AGM's in the Spring of this year.

There are two important points to note in respect of this proposal.

The first is that we will only proceed along this path if we are convinced that any budget approved can be met from membership and magazine income. The costs of running the Club have always been met from these sources with all other monies raised from functions, collections etc. devoted 100% to the Club's charities. The committees (LHCI and LHCHK) believe strongly that this defining feature of the LHC in Asia that "Every dollar raised in the name of charity goes directly to charity" should not be compromised.

The second point to note is that the establishment of the Secretariat must not detract in any way from the duty and obligation of the various committee members and indeed ordinary members to continue to give of their time and effort to foster and develop the Club in their respective Branches and beyond. The Lighthouse Club at its heart remains a volunteer organization and this should continue.

Finally, I would like to end this longer than usual message by highlighting the setting up of a new LHC Branch which has been established in Yangon, Myanmar where an intrepid team of LHC pioneers has got things up and running with regular monthly get-togethers in a downtown hostelry. My congratulations and thanks to John Anderson, Pat Gan-Hobbs, Lillian Fok and the others involved in the start-up and a big welcome to the LHCI family. If any members are passing through Yangon, I am sure that the guys will be most welcoming of visitors.



Bob Park
Chairman
The Lighthouse Club,
Asia Pacific Region

In This Issue

Benevolence

- 6 Volunteers from Paul Y Engineering Group and MTRC organise guided tour to Mai Po Nature Reserve
- 8 Lighthouse Club Asia Pacific Region Treasurer's Report
- 8 A local engineer on the road to recovery thanks to the support of caring friends

Interview – Key Opinion Leaders Share Unique Insights

- 10 With a distinguished career spanning more than 40 years including coveted postings around the world, we are extremely grateful to acclaimed engineer Dr Robert Care for participating in this brand new section of The Lighthouse

Cover image of Tree House Concept designed by Rogers Stirk Harbour + Partners

Regional Branch Updates

- 29 Kuala Lumpur
- 32 Singapore
- 33 Ho Chi Minh City
- 34 Hong Kong
- 37 Macau
- 40 Manila
- 44 Australia



Cover Story

- 14 Innovative architectural designs are redefining future living

Sponsors

- 48 Lighthouse Club Asia Pacific Region Sponsors 2016

Events

- 50 Calendar of forthcoming member's events April to June

About The Lighthouse Club

The Lighthouse is the magazine of the Lighthouse Club Asia Pacific Region, which was established in 1998. The Lighthouse Club was originally established in England in 1956 and first came to Asia in 1986 with the formation of a Branch in Hong Kong. The Lighthouse Clubs that were in existence in 1998 in Asia agreed to the formation of the Lighthouse Club Asia Pacific Region.

The aims of the Lighthouse Club worldwide are to promote good fellowship amongst its members who work in or are associated with the construction industry and to provide charitable assistance to those in need within the construction industry and to their dependents in qualifying cases.

In addition to the charitable works of the individual branches of the Lighthouse Club, the Lighthouse Club Asia Pacific Region has two related Hong Kong based charities which provide charitable assistance throughout the Asia Pacific region: 1

The James Battersby Lighthouse Club Educational Trust which provides assistance for education and training to qualifying young persons.

The Lighthouse Club Asia Pacific Region Benevolent Trust which provides assistance to relieving poverty and financial need to persons currently or previously employed in the building and civil engineering industries and allied trades.

For more information and membership / sponsorship enquiries please contact the Membership Secretary or Deputy Chairman of the Lighthouse Club Asia Pacific Region at lighthousehk@gmail.com. To advertise in this magazine please contact publisher@rofmedia.com or lighthousehk@gmail.com

THE LIGHTHOUSE Spring 2017

The Lighthouse Club Asia Pacific Region
Suite 1901-2, Hopewell Centre,
183 Queens Road East, Wanchai, Hong Kong

Tel : +852 2736 9885
Fax : +852 2687 2252
lighthousehk@gmail.com

Administrator : Elaine Man

Editorial Committee :
Mike Atkin / Vincent Connor / Steve Tennant
John Battersby / Mike Staley / Elaine Man

Publisher : Mike Staley
E : publisher@rofmedia.com
T : +852 3150 8988

Advertising : Bryan Chan
E: bryan@rofmedia.com
T: +852 3150 8912

Designer : Parnell Chan
Published by ROF Media

APR Executive Committee

Chairman
Bob Park
bobpark@rmparkconsulting.com
Immediate Past Chairman
Keith Buckley
keith.buckley@cotai.venetian.com.mo
Chairman Elect
Rod Noble
roderick.noble@39essex.com
Deputy Chairman
John Battersby
johnbattersby@bkasiapacific.com
Secretary
Steve Tennant
stevetennanthongkong@gmail.com
Treasurer
Phil Clarke
phil.clarke@cotai.venetian.com.mo
Membership Secretary
Jim Chessell
jchessell@bkasiapacific.com
Bangkok
Gareth Hughes
gareth.hughes@rsmthailand.com
Ho Chi Minh City
Colin Johnston
cjohnston@bkasiapacific.com

Hong Kong
John Battersby
johnbattersby@bkasiapacific.com
Steve Tennant
stevetennanthongkong@gmail.com
Bob Park
bobpark@rmparkconsulting.com
Kuala Lumpur
Bert de Munck
bert.demunck@plus3.com.my
Macau
Keith Buckley
keith.buckley@cotai.venetian.com.mo
Manila
Guenter Taus
guenter.taus@jec.com
Phnom Penh
Euan Ritchie
ritchie@artisansurfacefinishes.com
Singapore
George Wall
gwall@asgardprojectsolutions.com
Jim Chessell
jchessell@bkasiapacific.com
Australia
Paul Roberts
Paul.Roberts@aquenta.com.au
Nick Longley
nick.longley@hfw.com

Early Christmas in Mai Po for the Lighthouse Club Assisted Families



Christmas is a time of giving and the Paul Y Engineering (PYE) volunteers sprang into action last December to spread the seasonal cheer.

On 17 December 2016, sponsored by PYE, a "Joyous Christmas – Mai Po Guided Tour" that brought Christmas cheer in advance to the beneficiary families of the Lighthouse Club took place.

On the day, the volunteers of PYE and MTR and the families took a guided tour of the Mai Po Nature Reserve. Under the watchful eye of the tour leader, they formed three teams to visit the gei wai ponds, fish ponds, birdwatching sites and the Education Centre. Everyone soaked up information about the wetland and its migratory water birds with great enthusiasm.

The tour was followed by a luncheon buffet at a hotel in Tin Shui Wai, after which it was party time with fun games and a thrilling lucky draw. Everyone thoroughly enjoyed the outing and left with fond memories of a great weekend together.

The aims of these outings are to provide a support network for families of construction workers suffering hardships resulting from job-related injuries or illnesses.

The Lighthouse Club would like to thank the continued support of Paul Y Engineering Group.





Viewing your project from a different perspective...

Aspect Asia has a wealth of experience in providing specialist skills in the commercial management of projects and in the resolution of a wide range of construction disputes.



- ▲ Commercial and contractual advice
- ▲ Preparation, defence and management of claims for time and costs



- ▲ Expert Witness services
- ▲ Dispute Management



- ▲ Forensic Planning and Delay Analysis
- ▲ Commercial and Project Management
- ▲ Quantity Surveying

Contact : Nick Adams

Aspect Consulting Asia Ltd

Units A & B, 10/F, Neich Tower, 128 Gloucester Road, Wan Chai, Hong Kong

Tel: +852 2827 6068 Fax: +852 2827 6168 E-mail: info@aspectasia.com.hk

Website: www.aspectasia.com.hk

Treasurer's Report

Hong Kong Branch issues membership renewal invoices via its PayPal account

Membership renewal invoices for 2017 have recently been issued to the Hong Kong Branch's Ordinary, Young, Student and Associate members. The invoices were issued from the Hong Kong Branch's PayPal account. As a result members can now pay their membership subscriptions online by credit card or via their own PayPal account. We believe these payment methods may be more convenient for some members.

Alternatively payment can be made by returning a copy of the invoice issued via the Club's PayPal account together with a cheque payable to "The Lighthouse Club Hong Kong Branch" to Suite 1901-2 Hopewell Centre, 183 Queen's Road East, Wan Chai, Hong Kong, for the attention of the Hon Treasurer.

We do hope that all of our Ordinary, Young, Student and Associate members will continue their support of the Lighthouse Club Hong Kong Branch by promptly renewing their membership for 2017.

HKB, HKBF, APR, JBET and APRBT accounts for 2016

The Hong Kong Branch (HKB), Hong Kong Benevolent Fund (HKBF), Asia Pacific Region (APR), James Battersby Educational Trust (JBET) and Asia Pacific Region Benevolent Trust (APRBT) accounts for 2016 are currently being prepared by the Club's accountant, for submission to the auditors KPMG.

We aim to submit the draft accounts to KPMG in late March and all things going well the audited accounts for the HKB and HKBF will be presented to the HKB members at the AGM in May 2017. A report on the 2016 accounts will be provided in the Summer edition of The Lighthouse.

If you have any queries regarding the financial affairs of the Club please feel free to contact the Treasurer via lighthousehk@gmail.com



Benevolence on our door-step: How one young Hong Kong professional's life has been helped by the Lighthouse Club

Marcus Cheng is a Structural Engineer with a happy family and two beautiful kids. He was diagnosed with Acute Myeloid Leukemia in 2014. He was told that there was a suitable bone marrow donor in 2015 but the donor was overseas and therefore the cost of the transplant could not be covered by the Hong Kong public health system. Marcus' colleagues raised some money for his transplant but it wasn't enough. They then referred the case to the Lighthouse Club. The Lighthouse Club helped to pay part of the cost so that Marcus could afford the transplant and would not miss his chance of recovering.

Marcus is now in the process of recovering from the transplant. During this recovery period, the Lighthouse Club also supports his family by

paying a monthly pension to him so that his wife can stay at home to take care of him and their young kids. His family also joined two of our family outings over the last year and it was great to see his kids having fun at both events. Marcus told us recently that he may be able to resume work in the near future and he truly appreciates the help offered by the Lighthouse Club during this most difficult period in his life.

Sometimes we imagine that the donations we make are going only towards the less well-off people in our industry. Simply put, ill health and accidents can affect any one of us and even when we think we are doing well, life can throw a curve ball at any time.



BKAsiaPacific

Commercial and Contract Management

Quantity Surveying

Dispute Resolution

Project Management

Planning and Programming

Training

BKAsiaPacific

BK SURCO Training

For over 30 years BKAsiaPacific has been providing a comprehensive network of Commercial and Contract Management; Dispute Resolution; Project Management; Quantity Surveying; Planning and Programming; Training and Professional Development services to the local and international construction industries.

www.bkasiapacific.com

Key Contacts

Hong Kong

John Battersby

johnbattersby@bkasiapacific.com

Nicholas Seymour

nseymour@bkasiapacific.com

+852 26872267

Singapore

Wilson Cheung

wcheung@bkasiapacific.com

+65 62742291

Malaysia

H T Ong

htong@bkasiapacific.com

+60 3 79872212

Thailand

John Baker

johnbaker@bkasiapacific.com

+66 2 6622306

Philippines

Cecilia De Castro

mcdecastro@bkasiapacific.com

+63 2 8452618

Vietnam & Cambodia

Colin Johnston

cjohnston@bkasiapacific.com

+84 8 38215458

Renowned engineer Dr Robert Care shares his insights and career highlights

Dr Robert Care has built and led high performance teams in diverse countries, cultures and economies. He has been highly effective in building the commitment, engagement and momentum for change in difficult and often highly resistant environments. His leadership style is characterised by a powerful combination of humility, humanity and commerciality. His sense of purpose is that he makes a difference wherever he is and whomever he is with.

His ability to combine care and compassion with profound wisdom has been integral to his own success and his ability to inspire others to strive and achieve. These highly prized attributes allow him to communicate complex and challenging messages and galvanise support.

Robert is a Fellow of Engineers Australia, a Fellow of the Australian Academy of Technological Sciences & Engineering and a Fellow of the Australian Institute of Management. His commitment to the community is reflected in his appointment as chair of the Common Purpose Charitable Trust in December 2013. Previously he was a Director of RedR Australia (Registered Experts for Disaster Relief) in 2006 and subsequently Chair of RedR Australia in November from 2008 until December 2010.

In 2012 Robert was made a Member of the Order of Australia AM for his services to Engineering, Business, Humanitarian Programs and Athletics. In 2013 Robert was recognised by the University of New South Wales as International Alumni of the Year. In 2014 Engineers Australia awarded Robert the prestigious accolade of Australian Professional Engineer of the Year.

Robert's approach has a basis in the appreciative inquiry model for problem solving. He is one of those rare individuals who can understand the requirements of both people and process.

His academic education is within engineering (PhD) and he marries very successfully this left-brain focused training with high level right-brain creativity.

Robert's coaching and mentorship model is based on listening in its very real sense, an attribute so often missing in today's fast-paced environment. Through truly hearing, he is able to respond with thought provoking questions, which may challenge deeply held and often subconscious beliefs. This approach creates new insights for clients enabling them to unlock and discover new ways of assessing and responding to complex and often seemingly intractable issues.

Alongside his mentoring and coaching clients, Robert is chair of The Arup Partnerships (global) and a Principal in the Australasia Region of Arup Group. His responsibilities include the Australian Capital Territory and Strategic Geographies (including Indonesia and New Zealand). He was a member of the Arup global Group Board from 2008 to 2014. He was also Chair of Arup Group's UK, Middle East and Africa region from 2010 to



2013, and Chair of Arup Group's Australasia Region from 2004 to 2010. In both cases Robert oversaw significant business turnarounds.

Robert's particular interests include workplace diversity, leadership, mentoring and coaching, both inside and outside Arup Group. He has used these skills to lift the performance and outcome in the various organisations in which he has held leadership positions.

Arup, a professional services firm of designers, planners, and project managers, are skilled in building design and have pioneered some of the most ambitious, ground-breaking and unusual sustainable buildings and infrastructure projects around the world today. Robert is convinced real value for clients is added through focussing on sustainability.

In a career spanning more than 40 years Robert has held posts in Japan, Hong Kong, Papua New Guinea, Australia and the UK. He helped to lead the reform of Australia's building regulations in the 1990s and he has worked on many major global railway and infrastructure projects.

Until 17 February, 2017 Dr Care was employed by Arup Group – Australasia as Principal | Strategic Geographies Leader and since then has worked for Collaborative Pty Ltd as Director Care.

The Lighthouse Club Asia Pacific is grateful to Dr Care for his participation in this Q & A.

1

Please give a brief overview of your current role and responsibilities.

As Strategic Geographies Leader my remit covers 'embryonic' businesses in Canberra (75% of my time), New Zealand (15%) and Indonesia (10%). The objective is to take each of these businesses from one to two personnel to a sustainable and resilient size. I also mentor and coach about 15 senior people within the business Australasia wide.

2

What do you enjoy most about your current position/profession? Please explain.

I have always enjoyed big and complex projects, e.g. bidding the BTSC Mass Transit back in the early 1990s; or the first Alliance project in Australia – the Wandoo B Full Field development. And apart from the technical challenges I have enjoyed finding ways for highly skilled technical people to work effectively together.

In much the same way, running two of the larger Regions of the Arup Group has presented similar challenges. In both cases our teams were able to lift their performance significantly, by engaging and empowering all members.

As my career has progressed my passion has become even more about assisting people that I work with to fully unleash their potential as part of a high performance team. So it would be the case that I love pursuing a coaching style of leadership.

3

What are some of the more challenging aspects of the projects you are involved with?

To me it always comes down to the people! Bring the right team(s) together; Finding a way to assist people to work together; and focussing on the agreed and aligned outcomes is what makes the projects worth working on. Making that difference!

One example would have been as Bid Manager on the BTSC project for Itochu Corporation in the early 1990s. As Bid Manager my role was to lead and direct the putting together of a winning bid. To achieve that I realised that my role was also to get everyone and every organisation (from many different countries and cultures) 'on the same page'. I developed this into an approach of listening, translating and sense making. It has stood me in good stead ever since.

4

What are some of the major changes you have witnessed in construction over the last ten years?

Alliancing was first introduced into Australia twenty years ago, but I think we are still processing the possibilities that exist in that space. To me we are still reaping the benefits of the changes in mindset and behaviours, although we are also bastardising the approach to a significant extent.

The advent on BIM and other disruptive technologies is brilliant and we are yet to see that in full flourish.

I would also like to think that greater involvement of women in the industry will produce positive results to the industry's culture, although there is still a long way to go.

5

Does your company emphasise safety in the workplace and how does this affect your duties?

I believe, and would like to think, that Safety is paramount at Arup. It is the focus and lead item on all company meeting agendas. Safety moments are now routinely held, taken seriously, analysed and emphasised. People know they will be supported if they raise safety issues.

6

What is one thing you know now that you wish you had known at the start of your career?

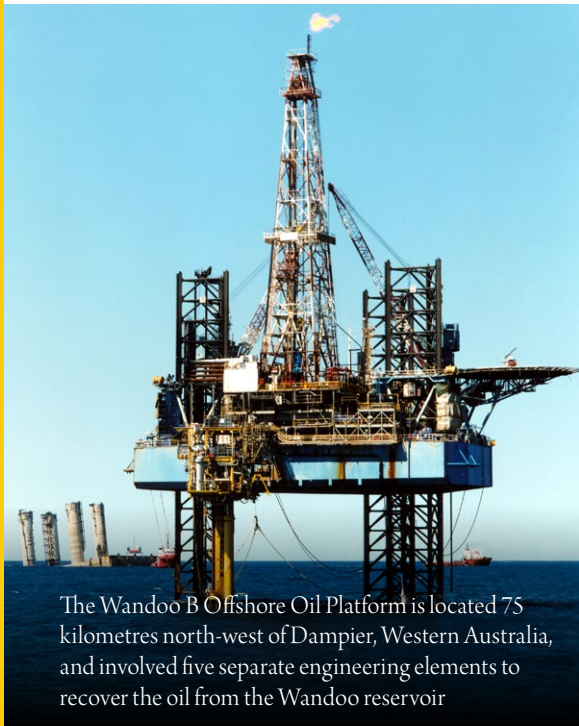
The importance of asking for help and that there is no shame in 'not knowing'. That help can be anything, from a technical challenge to personal issues up to and including mental health issues. That of course extends to mentoring, coaching and patronage.

7

If you had the power to change one thing about the local construction sector and how it operates, what would that be?

I believe strongly in the power of cooperative and collaborative working (hence the name of my new company – Care Collaborative Pty Ltd). I think there is much to learn in the Alliancing space and we need to prevent our quite human characteristic of perverting approaches to damage that possibility. We may already be too late on that. I would also view that far too often quality is sacrificed for time and cost, unnecessarily. That is not to endorse waste.

In procurement we far too often fail to resolve the principles before we bring in the lawyers or trot out the tired old standard terms and conditions.



The Wandoo B Offshore Oil Platform is located 75 kilometres north-west of Dampier, Western Australia, and involved five separate engineering elements to recover the oil from the Wandoo reservoir

8

Is there any advice that would share with new graduates entering the workforce in 2017?

Yes be curious, ask questions, don't be afraid to ask and make sure you look after yourself and those around you. See also my recent speech to graduates at UNSW Civil Engineering Graduation Ceremony - <https://www.youtube.com/watch?v=ZxpFI76DkBE>

9

Do you have one dream project that you would like to be a part of? Please explain.

I have found Alliance Projects very rewarding so I am tempted to say a large, complex, probably industrial project formulated under an Alliance procurement approach. But actually, based on my experience with the British Rail Recovery program in 2000 to 2004 following the rolling contact fatigue issue that brought the British Rail system to its knees following the Hatfield rail crash October 2000, I would say a challenging, recovery project where complex technical issues never before encountered are confronted, working against the clock to save a business from catastrophe. That would be my pick of a project to work on.

10

What's the best thing about living and working in Australia?

The 'big sky' and general high living conditions, although I worry we might be squandering that now; the "can do" approach, and the friendship (aka mateship) that approaches collaborative working.

Dr Robert Care can be contacted at **Mob: +61 419 250 960**
or by **Email: Robert.care@arup.com and/or Robert.care@outlook.com**

Laying the foundations for success

We've been helping clients on construction projects in Asia for over 30 years.

Commercial. Local. Innovative. Excellent.

That's Hogan Lovells. We are here to help.

Key contacts:

Timothy Hill, Partner, Hong Kong, timothy.hill@hoganlovells.com

Damon So, Partner, Hong Kong, damon.so@hoganlovells.com

James Kwan, Partner, Hong Kong, james.kwan@hoganlovells.com

Kent Phillips, Partner, Singapore, kent.phillips@hoganlovells.com

Terence Wong, Partner, Shanghai, terence.wong@hoganlovells.com

www.hoganlovells.com

Hogan Lovells is an international legal practice that includes Hogan Lovells International LLP, Hogan Lovells US LLP and their affiliated businesses. Images of people may feature current or former lawyers and employees at Hogan Lovells or models not connected with the firm.

www.hoganlovells.com

© Hogan Lovells 2017. All rights reserved.



THE CONTRACTS GROUP LTD.

Commercial, Contractual and Management Consultants
to the Construction Industry



**RISK
MANAGEMENT**



**PRE-CONTRACT
SERVICES**



**PROJECT
MANAGEMENT**



**CLAIMS, CONTRACTUAL AND
DISPUTE MANAGEMENT**



DISPUTE RESOLUTION



EXPERT WITNESS

Blueprint for the Future

The rapid pace of technological innovation, continued urbanisation and the growth of global trade are fuelling development on a scale never before seen in human history. In 2017 the challenges faced by society are many and require innovation in architectural design which is fundamentally changing the very fabric of our buildings and infrastructure.

Text: Joe Wyatt
Edited: Mike Staley

Quay Quarter Tower, Sydney, Australia
Designed by 3XN



Future architecture is already present in our towns and cities. New buildings are taking on forms barely imaginable even quite recently.

Some of the challenges requiring new building forms are universal, some are local. The consumption of natural resources that contributed to the rise of the megacities of the twentieth century is no longer sustainable. Our patterns of consumption are being urgently rethought. Emerging economies are looking to establish unique presences on the global scene but must now address issues of scarcity and environmental impact. Newly developing economies are also the beneficiaries of brand new technologies which offer designers new materials and processes with which to tackle the challenges of a modern world and the complex performance objectives sought by developers.

Many urban populations are ageing and need residential and health care facilities which provide sensitive support for vulnerable members of the community. Some communities are small and remote and require architectural design to improve livelihoods in areas with limited resources. In densely populated centres space is a premium and requires visionary design excellence to ensure that civic and commercial buildings can be reimagined to provide

for the rapidly changing needs of populations racing into the future, a future of fantastic architectural design.

Society's issues are not objects of contemplation but contemporary challenges for which innovative and creative design solutions must be sought. Showcased here is a selection of projects that offer a glimpse of things to come.

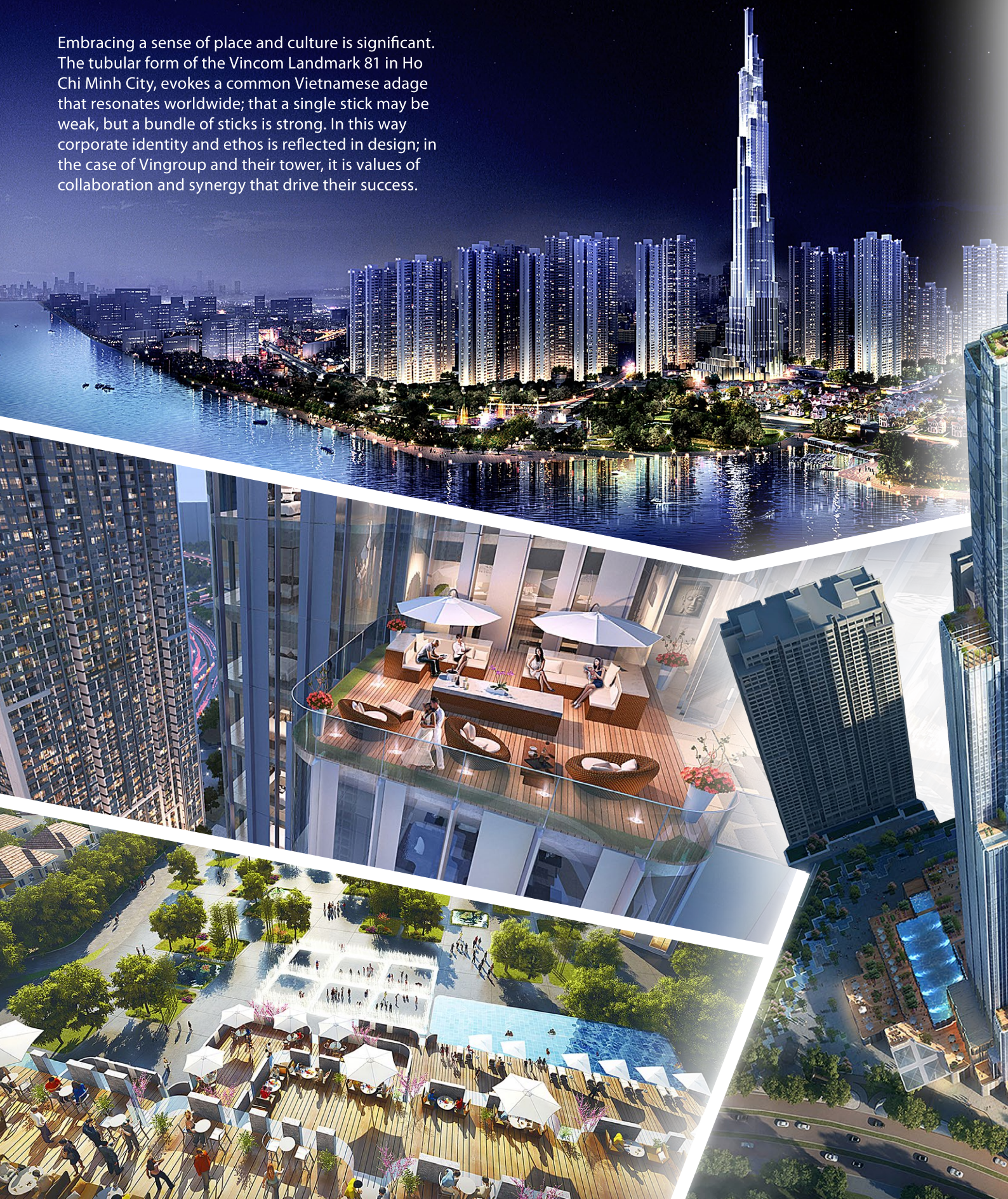
Making a statement

Landmark buildings are key to establishing a city's identity. As emerging economies across the Asia-Pacific seek to establish themselves on the global stage, creating iconic buildings that stand out against a skyline can be bold statements of intent and ambition.

The Quay Quarter Tower in Sydney, Australia comprises a series of stacked, angled glass volumes to create a striking spectacle in the city's Circular Quay precinct. The massing of each rotated slice divides the building into five distinct volumes, atop which are exterior green terraces that provide scenic areas for socialising not typically found in commercial high rises. These spaces dissolve the verticality of the structure whilst the podium levels greatly increase the area's spaces for social interaction.



Embracing a sense of place and culture is significant. The tubular form of the Vincom Landmark 81 in Ho Chi Minh City, evokes a common Vietnamese adage that resonates worldwide; that a single stick may be weak, but a bundle of sticks is strong. In this way corporate identity and ethos is reflected in design; in the case of Vingroup and their tower, it is values of collaboration and synergy that drive their success.





Vincom Landmark 81, Ho Chi Minh City, Vietnam
Designed by Atkins

Local responses

Intelligent designs are often made-to-measure responses to their local environment. The Trousdale residence and retail development in Seri Kembangan, Malaysia responds to the sub-tropical conditions of its environment through its reliance on wooden timber screens to facilitate natural ventilation. Expressive of the local vernacular and architectural palette of the region, the accumulation of these wooden screens create deep overhangs that in turn provide shade for outdoor pocket spaces.

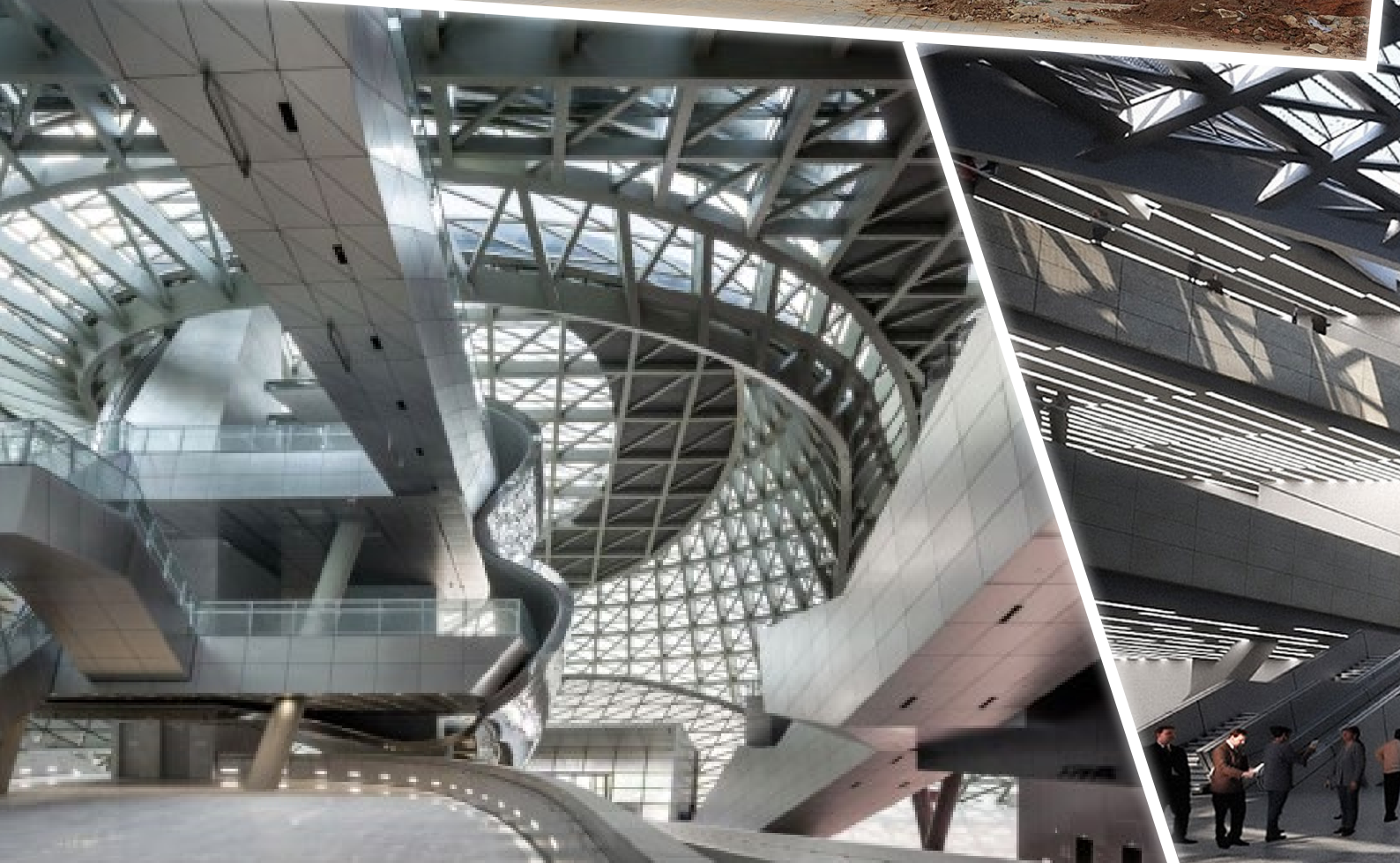




▲ Trousdale Mixed-use Development, Seri Kembangan, Malaysia
Designed by BDA in collaboration with AECOM Landscape

A renewed emphasis on renewable sources of energy is required. Solar and geothermal energy sources are used to power the Museum of Contemporary Art and Planning in Shenzhen, China. Ample natural daylight floods the interior space, leading to substantial savings in electricity consumption. Moreover, a functional exterior facade comprises natural stone louvers and an insulated glass climate envelope to form a truly innovative and low-impact design.

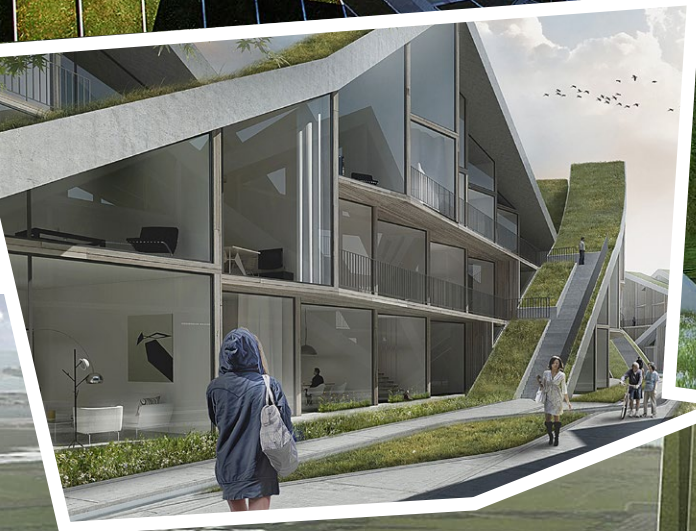
Museum of Contemporary Art & Planning Exhibition (MOCAPE)
Designed by Coop Himmelb(l)au Wolf D. Prix & Partner





Community

Emotionally intelligent projects that improve the wellbeing of their community are invaluable assets. The Hualien Wellness Residences in Hualien, Taiwan cater for the area's ageing population by encouraging an active and health-conscious lifestyle. A medical facility within the complex offers residents ready access to healthcare services, whilst a complex-wide public path and shared public amenities provide ample opportunity for social interaction. Gardens found at every level of the residences foster an amenable living environment and foster physical, mental and spiritual wellbeing.



Hualien Wellness Residences, Hualien, Taiwan
Designed by BIG - Bjarke Ingels Group





When resources are limited, ingenuity in design can be key. Tree House is the latest international housing project to provide solutions in low-cost housing. Assembly requires only simple tools and is adaptable to varied sites as required. The modular design comprises a series of 75m² timber-framed units stacked up to over ten stories around a central lift and stair core. Straightforward solutions like Tree House offer an elegantly simple vision for providing for the housing needs of the future.



Tree House concept
Designed by Rogers Stirk Harbour + Partners

A whole new workplace

Offices of tomorrow must keep pace with the ever-evolving 'world of work'. The central podium at the Guangdong-Macau Traditional Chinese Medicine Science and Technology Industrial Park in Zhuhai, China incorporates a mix of communal breakout spaces and areas for quiet concentration. Equally, the internal configuration of the higher floors is a flexible blend of collaborative space and individual privacy that best suits the needs of the team-centric technology firms that populate the building. These measures and others should be embraced by workplace designers worldwide to engage employees and maximise productivity by creating healthy internal environments.



Guangdong-Macau Traditional Chinese Medicine
Science and Technology Industrial Park, Zhuhai, China
Designed by Aedas



Shanghai K2 Xinhua Lu
Designed by Aedas



Sustainability in the future is paramount

Sustainability should be at the forefront of every design philosophy in 2017. The Shanghai K2 Xinhua Lu Project in Changning, Shanghai incorporates photovoltaic panels into its facade, tower skylight and pavilion roof to create a sustainable energy resource. Treated sewage and rainwater is reused to irrigate the structure's landscaped areas. F&B terraces are fitted with mist sprinklers to reduce solar heat gain and thus lower external temperatures by up to 8C.





Engaging with your surroundings is even more salient in rural areas. The redesign of the Lichen Country Club in Singapore comprises a low-lying spread of six small open pavilions or pods sat harmoniously amongst the natural topography and ecosystem of the area. A biophilic design approach integrates nature into the lived environment through a constant visual and tactile connection with the area's fauna, to minimal impact.



Lichen Country Club, Singapore
Designed by Park + Associates





▲ East Perth Power Station, Perth, Australia
Designed by Hassell

The adaptive reuse of older, ageing buildings into new projects can be key to land conservation and reducing waste. The East Perth Power Station in Perth, Australia reimagines a disused power station into a contemporary art gallery. Conceived as a series of rotating and shifting planks creating a horizontal and terraced urban plateau, elements of the original power station are preserved to protect the building's heritage whilst integrating the new development.

These strategies are some of the many ways in which designers are imagining the future. It is clear that, from commission to completion, architects must consider their role as social scientists and foster relationships between their projects and the world beyond, designing forward-focused and innovative projects assisting humanity to flourish along the path ahead.

**Tier 1: Hong Kong
Construction**

(APAC Legal 500, 2017)

**First tier: Hong Kong
Front End Construction
Law Firms**

(Doyles, 2016)

**First tier: Hong Kong
Construction Litigation
Law Firms**

(Doyles, 2016)

Clyde & Co has **'one of
the best construction
practices in the region'**

(APAC Legal 500, 2017)



Ian Cocking

Partner, Hong Kong

T: +852 2287 2802

E: ian.cocking@clydeco.com



Gilbert Kwok

Partner, Hong Kong & Beijing

T: +852 2287 2804

E: gilbert.kwok@clydeco.com

www.clydeco.com

© Clyde & Co 2017

Festive get-together marks the start of Chinese New Year in KL

On Tuesday, 10 February 2016 (11th day of Chinese New Year), the Kuala Lumpur branch celebrated their traditional annual Chinese New Year Get Together, for the 3rd consecutive year.

Over 100 members, representatives of Master Builders Association Malaysia and guests of Kuala Lumpur's Construction Industry gathered at the regular El Sid's Bar, Damansara Heights.

The main sponsor of the evening, BK Burns & Ong Sdn Bhd (a subsidiary of BK Asia Pacific), Proforce and Entrust Group sponsored the traditional Lion Dance, a whole roast pig, mandarin oranges, cookies and an Ang Pow or Hong Bau each (containing local ToTo and 4D lottery tickets, with top prize money of over RM25 Million or approx. USD6 Million) for everyone who attended. Any winner was requested morally to donate half of the winning proceed to Lighthouse Club. Unfortunately, no winner was reported, sigh !!

Every year, just before Chinese New Year, everyone starts to look forward to the freshly roasted whole pig. Even the skilled meat carver becomes part of the tradition and it appears he is carving the pig faster every year, as the whole pig, still warm and steaming, was consumed by the attendees within first half hour! Obviously, it was a delicious crispy pork treat, which went well with the drinks, especially with good whisky.

A Chinese New Year event will not be successful without a Lion Dance that brings good health, prosperity and luck to all of us. This year we had four Lions of Ti-Ratana Welfare Society (a reputed orphanage with more than 150 orphanages, 100 old folks and 20 single mothers, located at Desa Sri Petaling) who entertained the crowd and brought much joy and laughter, including traditional auspicious lion blessings to everyone present. This Lion Dance was performed by orphan children between five and eighteen years old and they have received their sponsorship from Sr. HT Ong on behalf of BK Burns and Ong / Proforce / Entrust for the 3rd consecutive year running. We would also like to thank El Sid's Bar for sponsoring food and a barrel of beer at the evening.

The Lighthouse Club of Kuala Lumpur wishes all members and guests, as well as Asia-Pacific branches a Happy, Healthy and Prosperous New Year 2017.



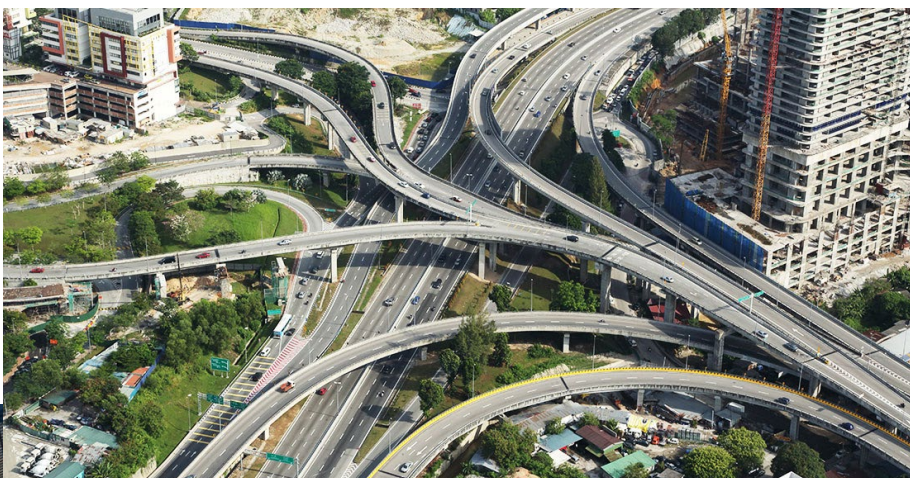
BK Asia Pacific
ENTRUSTY
PROFORCE



Underground works progress in KL for MRT Line 2

Mass Rapid Transit Corporation Sdn Bhd (MRT Corp) awarded the RM15.47 billion (about US\$4 billion) underground works package for the MRT Line 2 to MMC Gamuda KVMRT (T) Sdn Bhd (MGKT) in 2016. Works are now in progress.

MGKT was awarded the contract after successfully completing excavation of the underground section of Line 1 when the last of ten TBMs procured for the project broke through into Pasar Seni Station. Line 2 with



13.5km of twin tube tunnels running between 11 underground stations will be a repeat of the Line 1 operations to excavate 9.5km of twin running tunnels between seven open-cut underground stations.

The underground works contract involves the design, construction and completion of tunnels, underground stations and associated structures such as portals and escape shafts for the 13.5km underground alignment from the Jalan Ipoh north escape shaft to the Desa Waterpark south portal.

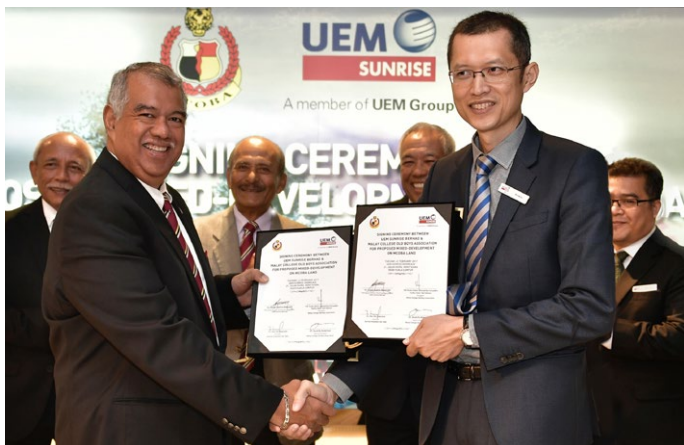
MRT Corp chief executive officer, Dato' Sri Shahril Mokhtar, said: "The working relationship between MRT Corp and MGKT began with the MRT Sungai Buloh-Kajang Line 1 and this good relationship can now continue with the SSP Line. The team has a proven track record of working in the challenging geology of the Klang Valley."

UEM Sunrise to Develop MCOBA Land

UEM Sunrise, through Sunrise Innovation Sdn Bhd (SISB) is to undertake a mixed-use development project on MCOBA's 2.65-acre land located along Jalan Syed Putra in Seputeh, Kuala Lumpur

Under the agreement, SISB will redevelop the land where the existing MCOBA Building is located and deliver to MCOBA a new office building and a banquet hall with a capacity for 1,200 people. SISB will also develop two blocks of serviced apartments together with other supporting facilities with the total initial estimated Gross Development Value for the project being in excess of RM750 million. Targeted mainly to owner occupiers, especially families from the surrounding areas, the unit sizes to be offered will range from 102m² to 139m².

UEM Sunrise MD/CEO, Anwar Syahrin Abdul Ajib, said: "We are very excited to embark on this synergistic venture with MCOBA. Seputeh is a mature residential neighbourhood, connected to Kuala Lumpur city centre and other urban areas through Jalan Syed Putra. MCOBA land's strategic location will appeal to city dwellers due to its proximity to amenities and commercial hubs such as Mid Valley City and KL Sentral. Being centrally located and with easy access to surrounding hotspots, the development will become a new landmark in the area."





A KEY PARTNER FOR HIGHLY TECHNICAL PROJECTS

For more than 60 years, VSL and its subsidiary Intrafor have been at the forefront of specialised civil engineering. The cornerstones of our success are a strong international presence in 30 countries, our taste for innovation and our highly skilled team. With 370 patents registered, our dedicated R&D Department strives continuously to develop and improve our proprietary systems. We communicate best practices to our staff through the VSL Academy - our Bangkok-based training centre - with the aim of always delivering the best quality to our clients while maintaining the highest safety standards.

Specialist in:

- Post-tensioning for buildings and infrastructure
- Bridge construction
- Foundations and ground engineering
- Containment structures
- Structural repairs and retrofits

info@vsl.com
www.vsl.com
www.intrafor.com



Let's talk.

Not just an invitation, but the way we work best.

Plus 3 helps put your construction projects
back on track and back on budget, across Asia.
So give us a call and let's talk.



Find out more at www.plus3.com.my.
Plus 3 in Malaysia and in Hong Kong.

Malaysia
Plus Three Consultants (M) Sdn Bhd
Contact: Michael McIver
Suite B-3A-12, Block B, Plaza Mont' Kiara,
No. 2, Jalan Kiara, Mont' Kiara, 50480 Kuala Lumpur.
Tel : +6 03 6201 0996 E-mail : kl@plus3.com.my

Hong Kong
Plus Three Consultants (HK) Ltd
Contact: Stephen Tennant
Suite 901, Level 9, The Hong Kong Club Building,
3A Chater Road, Central, Hong Kong
Tel: +852 2851 2528 E-mail: hk@plus3.com.my

A change of leadership in Singapore

After the AGM in March there has been a slight change in the leadership and structure of the committee with John Howes continuing as the President, Jim Chessell taking over as the Secretary and George Wall as the Treasurer. Jon presided over the St Patrick's Day celebrations that took place during the March 2016 get together, which saw everyone looking glorious in green. The March get together was generously sponsored by HK-A Global; being the new brand for Hill International.

During April we are planning for the Amazing Race by MRT, which has raised significant funds for the Lighthouse Club in previous years.

A number of exciting events are planned for the coming months; these include the Annual Charity Golf Tournament, which will be moved to earlier in the year and of course the Dinner and Dance in November, which is set to move to a new venue...watch this space!

The Lighthouse Club Singapore has continued its fundraising efforts through a variety of avenues, the backbone of which remains the monthly meetings, kindly supported by our sponsors and attended by a growing number of members keen to promote the Club's work in Singapore. These are held on the second Thursday of every month.

Support continues to be given to needy individuals both in Singapore and the region. As well as those who have been injured in industrial accidents. We are also continuing to strengthen our link with Transient Workers Count Too (TWC2) as an avenue to connect with those that are in need of our support.



Arup part of appointed consulting team for masterplan Jurong Lake District Singapore

Today, the Singapore Urban Redevelopment Authority (URA) has appointed KCAP Architects&Planners, leading a multi-disciplinary team consisting of SAA Architects, Arup, S333 and Lekker, as winning consultant for the development of a masterplan for Singapore's Jurong Lake District.

The team submitted the best conceptual masterplan for the site.

Integration of heritage and nature

The team developed a high-density mixed-use concept masterplan for the area around the future high-speed rail (HSR) terminus in Singapore. The ambition is to develop the area into a new mixed-use business precinct and home to the future HSR terminus, which will further anchor Jurong Lake District as 'a district of the future' and as Singapore's second Central Business District. A key focus of the winning conceptual plan submitted by KCAP and team involved the integration of new waterways and a series of green spaces within Jurong Lake District whilst manifesting a strong, distinctive identity.

Process

An evaluation panel comprising senior representatives and practitioners from government

agencies, academia and industry selected KCAP and team out of five international shortlisted teams as the winning consultant. Following this, the team will work with URA and relevant agencies to draw up a detailed masterplan proposal for the district. There will be an exhibition of the proposal in mid-2017 to gather public feedback whereafter the team will work with URA to refine the plans.

Jurong Lake District

Jurong Lake District is a regional centre in west Singapore, planned as part of URA's decentralisation efforts to create new commercial activities, amenities and recreational facilities outside the Central Area of Singapore. The new mixed-use precinct, Lakeside Gateway, is set within the Jurong Lake District and will function as a new international gateway into Singapore with the future High Speed Rail to Kuala-Lumpur, Malaysia.



Work Starts On Housing Project For Workers In Bac Ninh

The Viglacera Infrastructure Investment Development Company under the Viglacera Corporation on 2 February 2 launched a housing project for workers in the Yen Phong industrial park (IP) in the northern province of Bac Ninh. The project is expected to accommodate about 4,000 employees, helping them shorten time to go to their working places and thus contributing to reducing traffic congestion at peak hours.

Covering an area of over 20 hectares in Dong Tien commune, the project includes 7,000m² for facilities for cultural activities, a kindergarten and parking-lot, over 23,800m² for transport facilities and over 13,000m² for green areas and sports grounds. Addressing the ground-breaking ceremony, Minister of Construction Pham Hong Ha said this is a practical project, contributing to realising Bac Ninh's socio-economic development target.

According to the minister, around 179 projects of social housing (71,150 apartments) in urban areas and IPs have been completed, accounting for only 28 percent of the goal set in the National Housing Development Strategy by 2020.

Built in 2005 on a total area of over 658 hectares, the Yen Phong IP is home to many investment projects of foreign renowned trade names such as Samsung, Orion, Flexcom, Dongsin, Mobase, Dawo Vina, and Hansol. A representative from Samsung Display of the Republic of Korea said the project will help better workers' living conditions, and contribute to improving the investment environment in Bac Ninh. The IP has attracted nearly 8 billion USD in investment, including 7.2 billion USD in foreign direct investment (FDI), contributing to local export value.



Women in Construction 10th Anniversary celebrated in style at the China Club, Central

Around 60-70 Lighthouse Club Women In Construction, Young Members and Hong Kong Committee members gathered at the prestigious China Club on the evening of 19th January in order to celebrate the start of the 10th Year celebrations of the formation of the Group.

Guests included Ms. Ada Fung, Hong Kong Housing Authority, Mr. Christopher To, former Executive Director of Construction Industry Council, Dr. Derrick Pang, Chun Wo Development Holdings Ltd & our current President, Dr. Kingsley Chan, Dermatologist, Dr. Sujata S. Govada, DUP international and, of course, Ms. Jenny Deli, famously the No. 1 Lady Member of a Lighthouse Club anywhere in the world.

Drinks and nibbles were served and the assembled were treated to a presentation by Shannon Ho, ably assisted by her fellow committee members Bobo Chow, Monique Hansen, Yahamali Wijesinghe, Cordia Yu, which outlined the history and the achievements of the Women in Construction Group since its inauguration in 2007.

John Battersby was then asked to speak about the Group's founder, Miriam Walker, who, tragically, is no longer with us. Miriam's vibrant personality and enthusiasm made the Group what it is today: a wonderful testament to

the commitment and determination of our ladies to be recognized as future leaders within the construction industry.

A total of HK\$6,730 donation was raised by passing around the pink helmets (to carry on the tradition which Miriam started).

A big Thank You for BK Asia Pacific who sponsored the event.

Women in Construction will be holding a series of celebratory events throughout the rest of 2017 details of which will be circulated to all members.





Aedas Director, Shannon Ho, said: It was delightful as a WIC member to attend the 10th anniversary celebration cocktail on 19 Jan, 2017 for the Lighthouse Club Hong Kong Women in Construction that was held at the China Club, a very decent, tasteful and traditional venue. Everyone enjoyed hearing from Ms. Jenny Deli, the very first female member of Lighthouse Club, who shared the story of the "Pink Helmet" that marked the position of woman in construction industry and John Battersby's touching tribute to Miriam Rose Walker, THE lady who started it all!

"The event ended at around 10pm but most of the members could not resist but going up to the rooftop afterwards to enjoy the beautiful views of Victoria Harbour. We enjoyed the nice cocktails and chit chatting till late even though it was a Thursday night. I want to express my appreciation to the WIC committee for organising such an amazing event in celebration of the 10th anniversary, not only for us female members, but also our male members, altogether."

Lighthouse Club Hong Kong Branch Adopts Wild Apricot and PayPal

As technology improves and more people look to online solutions for managing day-to-day tasks, the Hong Kong branch has also taken on board feedback from the membership to adopt Wild Apricot (a web-based membership software with additional functionality) and PayPal (an online payment service permitting payments via credit cards or PayPal accounts) to provide more convenience to the members for their annual membership subscriptions, bookings for events and more. The London branch of the Lighthouse Club has already adopted Wild Apricot. Therefore, the Lighthouse Club Hong Kong Branch is pleased to be able to provide this

added convenience for members. For those that prefer, the more traditional methods of postage, paper forms, emails, cheques and cash will still remain.

Members will be receiving notifications for membership subscription renewals via emails generated through PayPal and some emails and links to events may have the PayPal and Wild Apricot domain in their reference; this will be genuine correspondence from the Lighthouse Club. These changes will also help to streamline the administration of the club, helping us to do more for the members."

CIOB mourns passing of 'special' past president Professor Li Shirong who was a good friend of the Lighthouse Club

CIOB members and staff have been paying tributes to the remarkable life of Professor Li Shirong, the first woman to become President of the CIOB who has sadly passed away after a long battle with lung cancer.

Described as "special" and "hugely determined" Professor Li Shirong, 59, from Chongqing in China became CIOB President in 2009, its 175th anniversary year, and the first person to take up the position from outside the UK and Ireland. Her appointment signalled the growing ties between the Institute and China, which Professor Li Shirong continued to strengthen.

A pioneer in construction management in her home country, Professor Li's work spanned academia, industry and government and reflects her strong belief in the need for sustainable urbanisation.

She was Professor of Construction Management of Chongqing University, deputy director of Chongqing Foreign Trade and Economic Relations Commission, a member of various advisory groups to the Chongqing government and the author of 26 books published in both China and abroad.

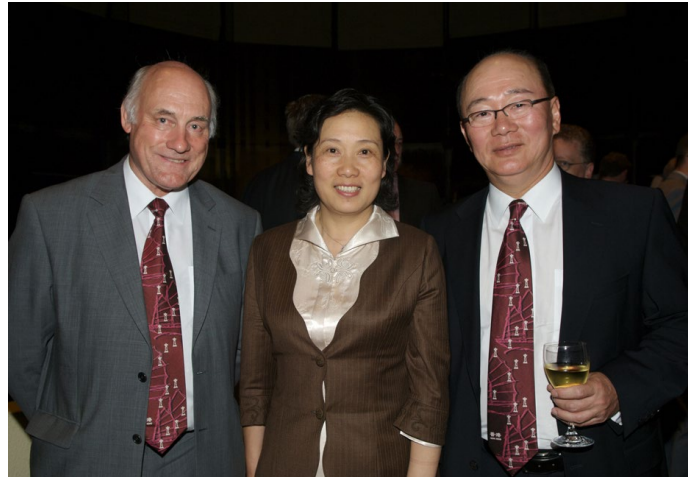
"I was shocked to hear of the sad news of Prof. Li Shirong's passing. I met her several times both in Chongqing and Hong Kong. She was a special lady and a good supporter of the Lighthouse Club. We often talked about how we could bring our construction industry fellowship and charity to China. She spoke at our Lighthouse Club Conferences in Hong Kong. Everyone who heard her speak loved her. She is indeed a huge loss to the whole of the construction industry but she will not be forgotten."

John Battersby, FCIOB, Chairman of the Lighthouse Club Hong Kong

Prof. Li Shirong first spoke to Lighthouse Club members at the Lighthouse Club's International Construction Conference on 4th and 5th May 2006 arranged to celebrate the Club's 20 years in Hong Kong and Asia. Prof. Li gave a presentation about the development of "the World's Largest Construction City – Chongqing". After the conference, Prof. Li attended the Club's Safety Awards on the evening of 5th May and the Ball on 7th May 2006.

On 17th September 2007, Prof. Li delivered a presentation entitled "Development and Business Opportunities in Chongqing and New Policies in relation thereto" at an evening seminar jointly arranged by The Lighthouse Club and the ICE in Hong Kong.

Prof. Li was back again to support the Club's International Construction Conference and Construction Services Exhibition on 25th and 26th May 2009 which was opened by the then Secretary for Development, Mrs. Carrie Lam Cheng Yuet Ngor.



Another busy period in Macau

The Lighthouse Club Macau is now in its twelfth year of existence.

We are sad to convey the news of the passing of Richard S. Travers peacefully at his home in Macau on 13th December 2016. Richard was one of the founding members of the Lighthouse Club Macau (LCM), and since inception in 2005 Richard was a constant supporter of the Club and its activities, having held various committee positions within the Club throughout. He provided inspiration for, and contributed much to the growth of the Club in Macau. An obituary to Richard follows this article.

The LCM Benevolent Funds was again active in 2016 in supporting 7 related construction related fatalities or accidents in Macau. Lighthouse Club Macau donations of almost MOP300,000 were made to the families of those involved and whilst our efforts are appreciated it is no substitute for the suffering experienced when the husband, father or breadwinner dies. It is a sad reminder of our high risk construction industry and reinforces the need for continued vigilance by all of us.

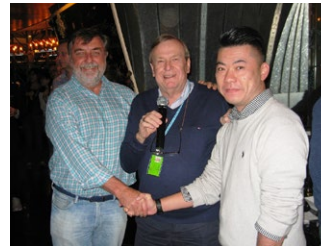
At the end of 2016, The Lighthouse Club Macau had more than 200 members, including 24 corporate members and 95 individual members. In 2017, due to the completion of several large projects, maintaining membership levels will be a challenge.

Monthly functions were held in December sponsored by Hsin Chong Engineering (Macau) Ltd, in January 2016 sponsored by Circle Engineering and Construction Ltd, and in February sponsored by Tong Lei Construction and Engineering Co. Ltd.

The Lighthouse Club Macau Annual General Meeting for 2016/17 will be held during the March function.

On 2nd April 2017, Min Da Construction Ltd, one of our local contractors and solid Lighthouse Club Macau supporters, is arranging and sponsoring their third Annual Charity Golf Day in nearby Hengqin Island, followed by a dinner at the Macau Tower. Min Da will be making a significant donation the LCM Benevolent Fund.

In April we will hold our Annual Dinner in Sands Cotai Central, Sheraton Hotel.



Wastewater Treatment Plant in the Macau Peninsula

This project, in progress, is part of a complete restoration and upgrading of the wastewater treatment plant's capacity, anticipating future reuse water standards. This upgrade work includes improving of the existing treatment system, increasing its nominal capacity and enhancing effluent quality.

In connection with the contract that extends from 2011 to 2016, the Macau Peninsula Wastewater Treatment Plant is operated and maintained to enable the Government to optimise their production costs associated with wastewater treatment, ensuring effective management of their assets and respecting standards and regulations in effect for health, the environment and quality. Management of production and treatment processes occur 24 hours a day, 365 days a year.

With a capacity of 144,000 cubic meters per day, existing water remediation is based on a conventional pretreatment and an activated sludge treatment process, divided in three treatment lines. The capacity of the plant will be increased to 184,000 cubic meters per day and the activated sludge treatment process will be modified with an MBR (Membrane Bioreactor) system. The membrane technology used for wastewater treatment will allow the Government of Macau to reuse or reject water which meets quality standards. This will be one of the world's largest MBR plants.

The wastewater treatment plant project was awarded to a joint venture between HCCG Building and Civil Engineering (Macau) Limited, a wholly-owned subsidiary of Hsin Chong, and CESL Asia Investments and Services Limited. The project expands treatment capacity at the wastewater treatment plant as well as improves its treatment quality.



Lighthouse Club – Macau, Annual Dinner 2017

28 April, 2017 (Friday) 7:00pm – 11:30pm

Feast Restaurant, G/F, Sheraton Grand Macao Hotel, Sands Central

Dress code: Smart Casual

Dear Friends and Construction Colleagues,

The Committee of The Lighthouse Club – Macau thank you for your constant support and participation in our social gatherings and events. We sincerely hope that you have enjoyed our activities as much as we have in organizing them.

To celebrate our continuing success, we cordially invite you to our Annual Dinner to be held at the Feast Restaurant, Sheraton Grand Macao Hotel, on Friday 28th April 2017. Cocktails will be served from 7:00pm and Buffet Dinner will start at 8:00pm. You are also encourage to invite your spouses, business partners and guests to join in our celebration!

It would be appreciated if you could return the completed reservation form no later than Wednesday 19th April 2017.

Individual Ticket ~ MOP \$700

Tables would be set for 2, 4, 6, or 10 persons

Prices includes:

- Reception Cocktails
- International Buffet
- Raffle of Prizes donated by our various sponsors
- Free-flow house wine, local beer and soft drinks till 10:00pm

Best regards,
The Committee
The Lighthouse Club – Macau

The Lighthouse Club – Macau
Construction Industry Charity

Obituary - Richard Shires Travers

The Lighthouse Club Macau is sad to convey the news of the passing of Richard S. Travers peacefully at his home in Macau on 13th December 2016, aged 66. Richard is survived by his wife Addy and his son Christopher.

Richard was one of the founding members of the Lighthouse Club Macau (LCM), and since inception in 2005 Richard was a constant supporter of the Club and its activities, having held various committee positions within the Club throughout. He provided inspiration for, and contributed much to the growth of the Club in Macau.

After graduation from the University of Leeds in 1972 with a degree in Civil Engineering he worked on several projects in the United Kingdom, including 4 years on the Thames Barrier Project. In 1985 he left the UK to work internationally beginning in the PRC on marine

and building works. Thereafter he moved into project management and consultancy firstly in Hong Kong then to Singapore, and on to senior positions in Macau, Malaysia and Taiwan where he was Deputy Director in the Civil Works Regional Office of the Taiwan High Speed rail Corporation. In 2004 Richard returned to work in Macau for several years until 2011/12 when he once again went to the PRC as a consultant to the supervisors of the 100km section of High Speed Datong-Xi'an Passenger Dedicated Line.

Richard encountered major health problems in recent years, and subsequently underwent challenging treatments which he met with typical stoicism, bravery and fortitude. Only when his health had deteriorated markedly did Richard decide to retire. This was despite offers to continue to work but Richard believed he would not be able to play his part fully to



his satisfaction, and did not want to let anyone down as a consequence. Up to his passing Richard maintained a bright outlook, setting aside his own discomfort while keeping a deep concern for his family.

Richard had a calm and steady influence in his approach to whatever he was involved in, and he brought this to the Club's affairs not only through committee business but at social events as well. A kind considerate and honourable man, his very personable approach and warm welcome to all he met at events will be remembered and missed by all.

RESERVATION

Name: _____ Membership Number: _____

(Corporate/Ordinary) Organization Name: _____

E-mail: _____ Contact Tel: _____ (optional)

Please reserve _____ seat(s) and find enclosed cash/cheque for _____ seat(s) x MOP700 = MOPS _____

Please reserve _____ table(s) for _____ seats per table.

Please send the completed reservation form together with a crossed Cheque payable to **Lighthouse Club – Macau**

Addressed:

For Attn:

Mr. Phil Clarke,
c/o Hsin Chong Engineering (Macau) Ltd.,
Alameda Dr. Carlos D'Assumpção No. 258,
Praca Kin Heng Long- Heng Hoi Kuok,
Kin Fu Kuok 7/F
Macao, SAR,
P.R. China

For Cash payment, please contact a committee Member directly.

IF payment by Bank Transfer, our account info:

Bank: **Commercial de Macau (BCM)**
Account Name: **Lighthouse Club – Macau**
Account No: **2000920**
Currency: **Macau Patacas (MOP)**

Bank in Slip is required to send together with the Reservation Form to Phil Clarke at phil.clarke@cotai.venetian.com.mo or membership@lighthouseclubmacau.com for conservation and record.

Receipt will be returned by e-mail for confirmation.

For any further information please email to phil.clarke@cotai.centian.com.mo or membership@lighthouseclubmacau.com or **LCM Via e-mail** info@lighthouseclubmacau.com

An exciting finish at Manila Quiz Night

February Quiz Night at the The Hub - Marriot Manila

The first Quiz Night for 2017 offered challenging fun for 42 competitive members and guests.

Event winners were Norfolk and Chance, with 2nd and 3rd places being tightly contested between teams Thugs and Ken Dodd's Dad's Dog's Dead who were tied after the first two rounds.

The event was sponsored by Cordsteel International Enterprises Ltd. Co. who are a Philippine company specialising in hauling, general services, construction (residential, commercial, industrial and infrastructure), trading and demolition.

**CORDSTEEL INTERNATIONAL
ENTERPRISES LTD.CO.**





We're here to help when things don't go as planned.

Contract Dispute Consultants has built an impressive track record in resolving complex construction disputes.

Call us on **852 2470 6033** to see how we can help you.

1405 Bonham Trade Centre, 50 Bonham Strand, Sheung Wan, Hong Kong
 t (852) 2470 6033 f (852) 2470 6133 e info@contractdispute.com.hk



www.contractdispute.com.hk



UPCOMING EVENTS:

Our Monthly Social Event is regularly held at the Marriott Hotel, Manila every third Thursday of the month:

April 20, 2017 – Quiz Night
 May 20, 2017 – Summer Soirée
 June 15, 2017 – Quiz Night
 July 20, 2017 – Curry Night
 August 17, 2017 – Quiz Night
 September 21, 2017 – Flamenco Fiesta
 October 19, 2017 – Cheese and Wine
 November 4, 2017 – Swinging Sixties (Annual Charity Ball)
 December 7, 2017 – Christmas Party

The Lighthouse Club receives a letter of thanks from Anne Margarete Arquiza

I was born in Liliw, Laguna. I do not remember much of my early childhood, but my mom said that I was a very active, curious and hard headed. My earliest memory is that was, my godfather used to tie me at chair. I'm grateful to my parents because they never stop providing our family needs. I am now taking up Bachelor of Secondary Education at Laguna State of Polytechnic University (L.S.P.U), also a member of Christian group at the said University.

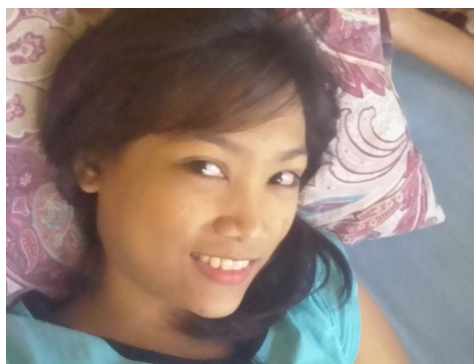
I am certain that my degree will become my ticket to a better tomorrow. I want to become a dedicated passionate teacher. I study hard devote my free time in reading a lot of books connected to my field of my specialization. Of course I know that life is full of challenges and hardships. Since my parents could not help me cover my college expenses in full, having a scholarship from The Lighthouse Club Manila is a blessing to me. Everything that I needed in school was provided by them, specially my books, uniform, seminar fees, team building fees, and especially my medication fees.

My lifetime dream is to become a lawyer.

The most memorable day of my life was the day I receive Christ. One phrase that I will never forget I can do all things through Christ to give me strength.

My main belief in life is god is my provider.

I am driven passion to help my future students to learn significant things from me. The main lesson that my parents taught me was always help other people in need. One event that influenced who I am today is the day I am Baptist by Pastor Dan.



I would like to convey my sincere thanks to the Lighthouse Club because they don't just help me with my studies. They also cover my medical expenses when I was confined to the Hospital last December. I was diagnosed with Acute Glomerulonephritis and Mild Stroke. Lighthouse Club assisted us financially to pay the hospital bills and even extended helping me with my herbal Medication.

Now, I can say, I have fully recovered and ready to pursue my dreams. Again thank you so much Lighthouse Club. To me and my family, you are an Angel sent by God.

Quality advice and deliverables that will make a real difference



Expert Witness
Expert opinion on complex quantum and delay issues.



Claims Support
Preparation and defence of contractual claims for extensions of time and additional payment.



Contract Advice
Independent opinions and contract reviews for risk and opportunity.



Dispute Resolution
Expert support in mediation, adjudication, arbitration, litigation and alternative dispute resolution.



ADR | Partnership

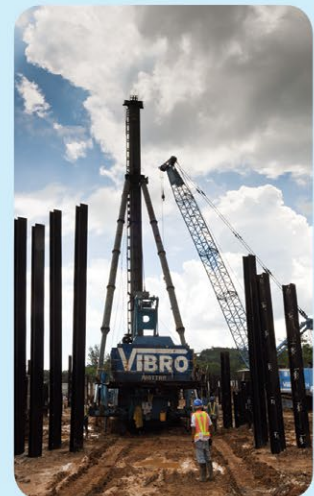
Partners in Alternative Dispute Resolution

1711 Citicorp Centre, 18 Whitfield Road, North Point, Hong Kong
t: (852) 2234 5228 f: (852) 2234 6228 e: info@adrpartnership.com

www.adrpartnership.com

To discuss your project requirements, please contact James Longbottom, Patrick O'Neill or David Longbottom on **(852) 2234 5228**

Civil Engineering Contractor Specializing in Foundation & Site Investigation Works



VIBRO 惠保(香港)有限公司
VIBRO (H.K.) LIMITED
新加坡成員 成員 of NWS Holdings

11/F., Chevalier Commercial Centre,
No. 8 Wang Hoi Road, Kowloon Bay, Hong Kong
Tel: (852)2137-5500 Fax: (852)2137-5599
Website: <http://www.vibro.com.hk> Email: email@vibro.com.hk

Updates from Down Under

The Australia Branch is hoping to hold four Balls this year, two of which are building on our previous successes in Brisbane and Perth, along with two inaugural Balls for Melbourne and Sydney. Please come along to any or all of them and help support us.

The Lighthouse Club Australia has partnered with Sydney Build 2017 which is a construction industry exhibition taking place in March this year.

We are working towards implementing a Bursary scheme for construction students in conjunction with TAFE Queensland, which we hope to have up and running in the next couple of months. If this proves successful, we will consider rolling this initiative out the initiative to other states.

We look forward to welcoming the APR Committee to Australia later



Sydney (New South Wales) Chapter

Sydney get-togethers are third Wednesday of each month from 5:30-7:30pm
Our current venue is the Verandah Main Bar, 55-65 Elizabeth Street, Sydney, NSW 2000.

However, subject to sponsor discretion, we intend to hold our monthly meeting at sponsors' premises subject to available space to promote our supporters and provide an exciting change of venue.

We are encouraging members to suggest suitable worthy causes within New South Wales and to assist with the collection of loose change in our lighthouse donation boxes.

February 17 sponsor Hill International
March 2017 – TBC
April 2017 – Aqenta Consulting

Construction progresses on Sydney Light Rail – updates from Transport for NSW

The CBD and South East Light Rail is a new light rail network for Sydney, currently under construction. The 12km route will feature 19 stops, extending from Circular Quay along George Street to Central Station, through Surry Hills to Moore Park, then to Kensington and Kingsford via Anzac Parade and Randwick via Alison Road and High Street. Construction will be completed and services will start running in 2019.

More track went into the ground in the CBD in February, with rail installed in zone two on George Street between Alfred and Grosvenor streets. Work will start in two new construction zones in Kensington and Kingsford in the coming weeks. Construction will get underway in zone 28, Anzac Parade between Abbotford Street and Todman Avenue, from Friday 3 March. In this section of Anzac Parade, a new construction compound will be established in

the centre lanes of the roadway for the first stage of construction; further traffic configurations will be implemented to facilitate the construction of the Light Rail. Existing bus lanes in both directions will be removed. These lanes will be open to general traffic and will operate as clearways.

Work will also start in zone 31, Anzac Parade south of Rainbow Street, from early April and new traffic signals will be installed at the Nine Ways intersection in the coming months. This is the most complex intersection reconfiguration that will be carried out as part of the project. This work will be scheduled to minimise disruption to traffic at this busy intersection.

More information at: <http://sydneylightrail.transport.nsw.gov.au>

Melbourne (Victoria) Chapter

The Victorian Chapter is keen to grow attendance and is actively pursuing sponsorship and clientele for the monthly Get-Togethers. Our mailing list exceeds 50 potential members and the average turnout is between 15 and 20.

The Melbourne Chapter has been busy organising an inaugural Victorian Ball, which we're hoping will become a mainstay on the Lighthouse Club calendar. We already have 50 paid up attendees and 2 sponsors. The event will include a three course meal with a six-piece jazz band. The wonderful gifts already donated for the raffle include three bespoke artworks of the Melbourne landscape, getaway stays at hotels and many more.

We are hoping some of our overseas members will attend, along with participation from members throughout the country. It takes place at 24 March 2017 at the Langham Hotel, and we would be delighted if we could get 150+ people to attend. The monthly Get-Togethers are held between 5.30pm and 7.30pm at the Belgium Beer Café, 5 Riverside Quay, Southbank.

Thanks to the sponsors so far:

8 December 2016 – Hill International

Upcoming get-together dates and sponsors:

16 February 2017 – Holman Fenwick Willan

20 April 2017 – Driver Trett Australia Pty Ltd

Venue: Belgium Beer Café, 5 Riverside Quay, Southbank



this year.

Brisbane (Queensland) Chapter

The date for the Brisbane Ball this year will be 5th August 2017.

Despite the extremely warm temperatures, we have had a good turn out to Brisbane get-togethers this year. They are always third Thursday of each month from 5.30pm – 730pm and we are always keen to welcome new faces so please encourage more people to come along.

Thanks to the 2017 sponsors so far:

19 January – Hill International

16 February – Law Image

Venue: Pav Bar, Stamford Plaza Hotel, Edward Street.

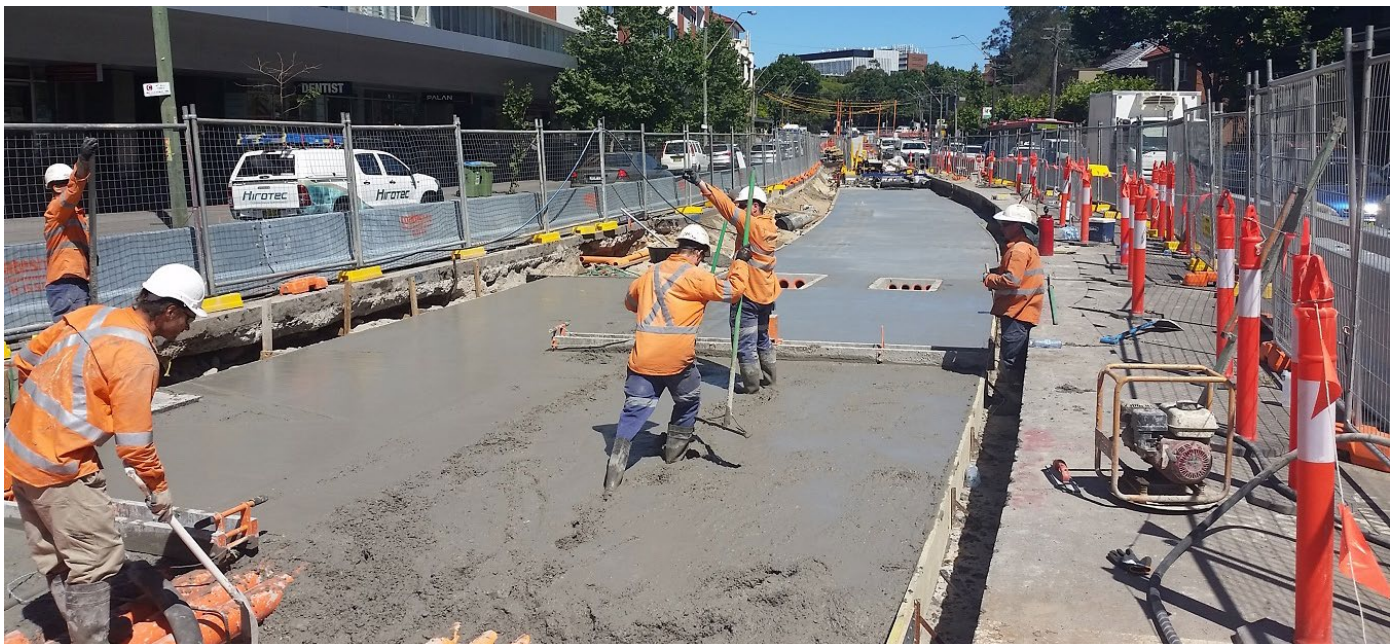


Image courtesy of Transport For NSW

Jacobs Secures Design Role for Hospitals Expansion Project

Jacobs Engineering Group Inc. has secured a key architectural design role in the Approx AUD\$400 million second phase of the transformational Blacktown and Mount Druitt Hospitals Expansion Project. The hospital is being built to accommodate population growth in Sydney's western suburbs. Jacobs will deliver architectural services for stage two of the project, which includes a new emergency ward, intensive care unit, operating theaters and birthing and maternity departments. The company is also responsible for the electrical, information and communications technology, and security system design for this next stage.

Jacobs Senior Vice President, Buildings and Infrastructure, Patrick Hill, said: "Our selection to participate in phase two is not only a testament to our work during the first phase, which began in 2011 and saw Jacobs providing architectural and engineering design services for the 32,000m², seven story clinical-services building, but also the extensive local and global experience we bring to this landmark project which has set a benchmark for hospital design across Australia."



Perth (Western Australia) Chapter

In Western Australia we started the year with an excellent monthly meeting in January (kindly sponsored by Clifford Chance). Clearly people wanted to start the year in the right way, and we had a very healthy turnout. This bodes well for the remainder of the year.

Our sponsors are lining up and we now have confirmed sponsors until the third quarter of this year. Thank you to everyone that supports us – we can't say this enough.

Our sponsors for the last few events have been:

November 2016 – Turner and Townsend

January 2016 – Clifford Chance

February 2016 – FTI Consulting

WA Sub-Committee

The new committee is bedded in and we're working like a well-oiled machine. Hopefully our efficiency will come through and be evident in our organisation of future events.

Winter Ball

Our (now famous) annual Winter Ball is set for 25 August 2017 in Perth. We are looking for sponsors for the event, so if you want to get involved please contact us on info@lighthouseclubaus.org.

Upcoming Events

We continue to meet at the Terrace Hotel, St. George's Terrace, Perth, on the last Thursday of every month. The branch has events on the following dates – with many thanks to our sponsors for each:

30 March 2017 – Sponsored by T|B|H

27 April 2017 – Sponsored by Mates in Construction

25 May 2017 – Sponsored by Contract Solutions International



Dulux Group And Vaughan Constructions Join Forces

Vaughan Constructions have announced the construction of an AUD165 Million coating plant for Dulux, located in the Merrifield Business Park in Mickleham in Melbourne's North West. When the 22,600m² factory opens later in 2017 it will create 70 full time jobs and be the largest such facility in all of Australia and New Zealand, demonstrating the ongoing support by Dulux of Australian based manufacturing. This is positive news for Victoria's manufacturing industry at a time the state is facing significant cuts in local employment opportunities.

In 2015, Dulux was the first business to announce it would take up occupancy at the 330-hectare business park. Construction of the AUD1.2 billion commercial precinct started in September that year and is projected to create more than 20,000 jobs. Dulux expects that the majority of personnel employed will be new to the business, with recruitment processes commencing mid-March.

Dulux Merrifield operations manager, David King, said: "We chose Merrifield for a number of reasons, including its strategic location on the Hume Highway and connectivity to the Eastern Seaboard. The Park is part of a mixed use community with both a residential aspect and a city centre and that resonated with us. With Merrifield being in a growth area, we can grow with the community."



Lighthouse Club - Asia Pacific Region Sponsors

ADR | Partnership
Partners in Alternative Dispute Resolution



AON
Empower Results®

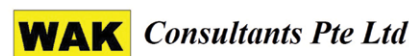




howden



MinterEllison



Forthcoming Events

of Spring 2017

~April~

Sunday 2

Macau Annual Charity Golf Day
Hengqin Island, Hong Kong Jockey Club, Happy Valley
Racecourse, from 7:00pm to 11:00pm

Thursday 6

Hong Kong International Gathering
Hong Kong Jockey Club, Happy Valley Racecourse,
from 7:00pm to 11:00pm

Kuala Lumpur Get Together

Jarrod and Rawlins, 63, Jalan Bangkung, Taman Bandaraya

Wednesday 12

Macau Social Gathering
Venetian Parcel 1 (Café Deco), from 6:00pm onwards

Thursday 13

Singapore Get Together
McGettigan's Irish Pub, 3A River Valley Road, Merchant's Court,
from 6:30pm to 11:30pm

Wednesday 19

Sydney Get Together
Verandah Main Bar, 55-65 Elizabeth Street, from 5.30 to 7.30pm

Thursday 20

Melbourne Networking event
Belgium Beer Cafe, 5 Riverside Quay, Southbank,
from 5.30 to 7.30pm

Brisbane Networking event

The Pav Bar & Courtyard, 39 Edward St, from 5.30 to 7.30pm

Thursday 20

Manila Quiz Night
Marriott Hotel, from 6.30pm to 9.30pm

Sunday 23

Singapore "The Amazing Race"
Contact Singapore Branch for details

Thursday 27

Perth Networking event
Terrace Hotel, St. George's Terrace, from 5.30 to 7.30pm

Friday 28

Macau Annual Dinner
FEAST Restaurant, G/E, Sheraton Grand Macau Hotel, Sands
Central, Taipa

~May~

Thursday 4

Kuala Lumpur Get Together
Havana Bar & Gill, Changkat Bukit Bintang, Bukit Bintang

Friday 5

Hong Kong Monthly Get Together
Insiders, 17 Fenwick Street, Wanchai

Wednesday 10

Macau Social Gathering
Venetian Parcel 1 (Café Deco), from 6:00pm onwards

Thursday 11

Singapore Get Together
Contact Singapore Branch for details

Wednesday 17

Sydney Get Together
Verandah Main Bar, 55-65 Elizabeth Street, from 5.30 to 7.30pm

Thursday 18

Brisbane Monthly Get Together
The Pav Bar & Courtyard, 39 Edward Street,
from 5.30pm to 7.30pm

Melbourne Networking event

Belgium Beer Cafe, 5 Riverside Quay, Southbank,
from 5.30pm to 7.30pm

Saturday 20

Manila Summer Soiree
Ceremonial Garden, Marriott Hotel,
from 7:00pm to 12:00 midnight

Thursday 25

Perth Networking event
Terrace Hotel, St. George's Terrace,
from 5.30 to 7.30pm

Saturday 27

Hong Kong Gala Ball
Hong Kong Convention & Exhibition Centre,
from 7:00pm to 12:00 midnight

~June~

Thursday 4

Kuala Lumpur Monthly Get Together
Contact Singapore Branch for details

Friday 2

Hong Kong Monthly Get Together
Insiders, 17 Fenwick Street, Wanchai

Thursday 8

Singapore Get Together
Contact Singapore Branch for details

Wednesday 14

Macau Social Gathering
Venetian Parcel 1 (Café Deco), from 6:00pm onwards

Thursday 15

Melbourne Networking event
Belgium Beer Cafe, 5 Riverside Quay, Southbank, from 5.30pm to
7:30pm

Brisbane Networking event

The Pav Bar & Courtyard, 39 Edward Street, from 5.30pm to
7:30pm

Manila Quiz Night

Marriott Hotel

Wednesday 21

Sydney Get Together
Verandah Main Bar, 55-65 Elizabeth Street, from 5.30 to 7.30pm

Thursday 29

Perth Networking event
Terrace Hotel, St. George's Terrace, from 5.30 to 7.30pm

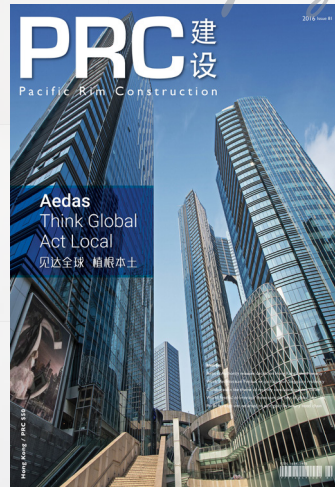
100% committed to serving the local building industry

ROF Media is the Hong Kong media group focused solely on building and construction. We create high-quality customised publications for a broad range of leading businesses. Since 2002 we have been providing effective solutions targeting high net worth individuals for our clients' tailor-made marketing materials, in print and online.

Reports



Magazines



Newsletters



Books



Catalogues



SCAN HERE
For more information

ROF Media

+852 3150 8988
info@rofmedia.com
www.rofmedia.com

RMD Kwikform Asia Pacific



- RMD Kwikform Asia Pacific provides innovative, productive and safe formwork, shoring and scaffolding systems.
- We are part of a worldwide company that provides a high level of technical and sales support coupled with the latest generation formwork and shoring systems.
- Our extensive product range enables us to provide the best solution to assist you with your next project.
- Our Sales Team consult with their customers to provide the best solution at a competitive price and they provide support throughout most aspects of the project.
- Our renowned engineering capability enables us to work together with our client's construction team to develop, design, and detail cost-effective engineered solutions that are practical, productive and safe.



Bringing
structures
to life

RMD Kwikform Hong Kong Ltd.

22/F, Excel Centre,
483A Castle Peak Road,
Cheung Sha Wan, Kowloon, Hong Kong
Tel: +852 2415 4882
Fax: +852 2745 0232
Email: rmd.hongkong@rmdkwikform.com

RMD Kwikform Philippines, Inc

Units 2406-2409 Raffles Corporate Center,
F. Ortigas Jr. Ave., Ortigas Center,
Pasig City, Phils. 1605
Tel: +632-696-7635
Fax: +632-661-6456
E-mail: rmd.philippines@rmdkwikform.com

RMD Australia

66 Bennet Ave, Melrose Park
Adelaide, South Australia 5039
Tel: +61 8 8179 8200
Fax: +61 8 8179 8201
Email: rmd.australia@rmdkwikform.com

RMD New Zealand Limited

101-105 Station Road, Otahuhu
Otahuhu, Auckland, 1062
Tel: +64 9 259 0353
Fax: +64 9 276 6732
Email: rmd.auckland@rmdformwork.com